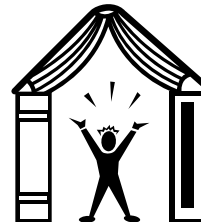


KSCA Conference 2009 March 4-6, 2009
“School Counselors: Moving From Good to GREAT!”

Marriott-Griffin Gate Resort, Lexington, Kentucky



****FREE AWARD LUNCHEON TICKETS TO THE FIRST 300 REGISTRANTS REQUESTING THEM!!****

Have We Got A Conference For YOU!

The KSCA Annual Conference is on its way! **We have MANY changes in this year’s conference** to make it the best one ever, just for you! So, **please read all the conference information carefully and send in your registration early**~ especially for the pre-conference workshops.

***Change #1- Only the first 300 registrants requesting it, will receive a FREE AWARDS LUNCHEON TICKET!!** All KSCA conference attendees are cordially invited to our Awards Luncheon on Thursday, March 6th from 11:45-1:15. **HOWEVER, THIS YEAR, YOU MUST REQUEST A TICKET ON YOUR REGISTRATION FORM!** Unfortunately, we had many ‘no-shows’ for our luncheon last year and paid for far more dinners than we consumed. Therefore, **YOU MUST HAVE A TICKET TO ATTEND THE LUNCHEON!!** Put a check in the box at the beginning of the registration form to reserve your ticket. The Marriott Culinary Staff prepare the delicious meal. *Counselors of the Year* as well as other numerous award recipients are recognized during this time of formal dining in a relaxed and warm atmosphere. (The number of guest speakers is limited this year, also!)

***CHANGE #2-FIRST TIME EVER- 3-HOUR WORKSHOP ARE BEING OFFERED IN THE EVENING OF WEDNESDAY, MARCH 4TH FROM 6:00-9:00.** KSCA wants to help you survive the budget cuts by giving you the option to also choose from four wonderful three-hour workshops on Wednesday evening from 6:00-9:00. This will allow you to possibly save a night’s lodging cost by not having to stay Tuesday night; allow you more ambitious counselors to obtain up to 9 EILA HOURS in addition to your 6 conference hours-by attending 9 hours of workshops on Wednesday; and possibly allow you to go to school to ‘tie up some loose ends’ or to leave later for the workshops/conference. This is a win-win possibility that we offer just to give you another option!

*****Change #3-** Is not really new, but may be new to you. **In Summer 2006, Marriott, Inc. sent each school system an announcement that the it would no longer be taking Purchase Orders for reservations of sleeping rooms. Your Central Office received this information that year.** However, please be aware that since 2006, Marriott Griffin Gate has not accepted P.O.’s. So be sure you make other arrangements for payment of your hotel room- it will save you a lot of time and hassle- and some money!!

Again, read the entire flyer and make your plans early! As always, everything that is planned, scheduled and hoped for is for **you**, the professional school counselor!



Hotel Reservations

Our KSCA Conference 2009 is again at the Marriott-Griffin Gate Resort in Lexington. The Marriott is located at 1800 Newtown Pike just off I-75/64 (Exit 115-The Airport Exit). The hotel is offering a conference rate of **\$109.00 single/double**. **Be sure to mention the KSCA Conference for this discount price. Make your reservations early!** **Cut-off date for this special rate is Wednesday, February 20, 2009. Anyone booking a room after February 20th is not eligible for the conference hotel discount rate.** (Remember, the Marriott does NOT accept P.O.’s for payment of sleeping rooms!) Contact the Marriott today by calling **1(859) 231-5100** or toll free at **1(800) 228-9290**.

KSCA PRE-CONFERENCE WORKSHOPS

March 4, 2009 ALL DAY 6 Hour Workshops Time: 9:00-4:00

1. Developing the Elements of the ASCA National Model School Counseling Program. Levels: K-5, 6-8, 9-12

Description: Bring your school and/or district team to develop your ASCA National Model School counseling program! Groups will analyze their current school counseling program, and will develop the elements in the four areas of the ASCA Model for their school/district. Participants will use the ASCA National Model workbook and also the handbook to guide their program development. Your copies of the ASCA National Workbook as well as the Handbook will be sent to you upon registration in order to complete the current school data before the workshop. (The price of both is included in the registration fee.)

This workshop is limited to 50 participants.

Presenter: **Dr. Judy Bowers**, consultant for school counseling program worldwide, co-author of the 'ASCA National Model for School Counseling Programs'.

2. Understanding and Responding to Youth Who Self-Injure. Levels: K-5, 6-8, 9-12, Post-Secondary

Description: The goals of this workshop are to encourage understanding of self-inflicted violence and promote healing from the need for self-injury in a holistic and trauma-informed way. Self-injury is an intense and often misunderstood topic, greatly affecting the lives of those who live with self-inflicted violence as well as those who care about them. The presenter will explore the many meanings associated with the acts of self-injury, and identify what has been both helpful and hurtful in facilitating healing.

This workshop is limited to 25 participants.

Presenter: **Ruta Mazelis** is a nationally known author, editor of "The Cutting Edge" newsletter, and a consultant of the Sidran Institute.

3. When the Grim Reaper Comes to Our School. Levels: K-5, 6-8, 9-12

Description: Tragically, death visits many school campuses each year. This session will present a multitude of materials and intervention strategies to help the counselor be pre-prepared in the event of a sudden loss; including letters to the parents, strategies for supporting children, faculty and family, and way to promote counselor self care and much more.

This workshop is limited to 25 participants.

Presenter: **Dr Cheryl Sawyer**, Associate Professor of Counseling, Coordinator of the Counselor Education Program at the University of Houston-Clear Lake, Texas

4. Screening for Suicide and Homicide Risk for Victims of Bullying. Levels: K-5, 6-8, 9-12

Description: Participants will learn the common characteristics of bullying and suicide, the collective dangers of bullying and suicide risk and acquire 'a decision tree' for effective prevention and intervention strategies to divert children and youth from choosing a "permanent solution to a temporary problem".

This workshop is limited to 25 participants.

Presenter: **Butch Losey**, LPC, Director of Training at Child Focus Training Center in Cincinnati OH; national presenter on the subject of bullying and suicide. **Susan Graham**, LPC, Director of Education Liaisons for Child Focus, Inc.

March 4, 2009 MORNING 3 Hour Workshops Time: 9:00 A.M.-12:00 NOON

5. The Five Love Languages. Levels: K-5, 6-8, 9-12

Description: This workshop will present how to nurture relationships by teaching the fact that how we relate to others is generally the same way we want them to relate to us. Children and adults are "People who don't care how much you know-until they know how much you care". Using the five love 'languages', the presenter gives an understanding to why and how we relate to others and how these 'languages' are used to help give and get the feeling of caring.

This workshop is limited to 25 participants.

Presenter: **Omar Morris**, School Counselor, Barrett Middle School, Jefferson Co. Schools.

6. CANCELLED Rachel's Challenge Levels: K-5, 6-8, 9-12

Description: Rachel Scott was the first person killed at Columbine High School on April 20, 1999. This workshop's mission is to show educators how to eradicate violence, prejudice, bullying and overall hatred. The participants will see how Rachel's life and her tragic death can encourage people to positive change in the way they treat others.

This workshop is limited to 25 participants.

Presenter: Family member of Rachel Scott.

7. Relational Aggression. Levels: K-5, 6-8

Description: Explore relational aggression and take a closer look at the WHAT, WHY and HOW to help *stop girl bullying* through small group, classroom, and individual sessions.

This workshop is limited to 25 participants.

Presenters: **Brittany Ford**, Counselor, Camden Station Elementary, and **Kerri Hammons**, Counselor at Harmony Elementary, Oldham County KY

8. Relationships- How to Get Teachers and Students to “Stay on That Island”. Levels: K-5, 6-8, 9-12

Description: Is your school’s teacher’s lounge already beginning to look like a set for the ‘Survivor’ show? Did your last faculty meeting look like it might need tiki torches and a first aid kit? Not only will you leave this session remembering why you went into education in the first place, but you will be LOADED down with ideas as well as practical strategies for keeping, pushing and MOTIVATING the kids in your school that are with you ‘on the island’. If you want to have FUN and improve student performance in your school-come on in!!

This workshop is limited to 25 participants.

Presenters: **Jenny Lynn Hatter**, Supervisor of Instruction, Harrison County Schools, KY

9. Grief At School. Levels: K-5, 6-8 9-12

Description: This workshop focuses on childhood bereavement and grief by describing signs and symptoms of childhood grief. Current school intervention plans as well as barriers the school counselors encounter within the school system are discussed.

This workshop is limited to 25 participants

Presenters: **Staci Holdeman** and **Chrissy Cummins**, Educators with KCTCS

March 4, 2009 AFTERNOON 3 Hour Workshops Time: 1:00-4:00 PM

10. The Magic of Counseling Levels: K-5, 6-8, 9-12

Description: Counselors are truly magicians. In order for a magician to be effective, they have to be able to engage their audience, establish trust, make connections and inspire confidence. Sound familiar? In this workshop, Carl Olson will use magic and magic concepts to give counselors ideas for use with students. This workshop will be hands-on and fast paced-participants will leave with ideas and resources to go back to tie work setting and truly work magic!

This workshop is limited to 25 participants.

Presenter: **Carl Olson** is a middle school counselor with over 36 years experience from Barron, Wisconsin. He was our guest a few years ago. If you missed him then-be sure to see him this year!

11. Cyberbullying: Our Youth are Dying to Get Online. Levels: 6-8, 9-12

Description: Seventeen-year old Rachael Neblett died by suicide after being a victim of cyberbullying. Perspective about the problem, the effects, simple strategies, responses and warning signs are offered from her family and her principal. QPR Suicide Gatekeeper Training is included from CHFS.

This workshop is limited to 25 participants.

Presenters: **Sheila Stanton**, Jefferson Co. Public Schools, **Mark Neblett**, Make a Difference For Kids, **Dave Marshal**, Bullitt Co. Schools, **Jan Ulrich**, Cabinet for Health & Family Services

12. Tips for Establishing Collaborative and Ethical Parent/Guardian Relationships. Levels: K-5, 6-8, 9-12

Description: Examination of how best to establish positive and collaborative relationships with parents/guardians of minor children from legal and ethical lenses via specific KY statutes and ethical standards is stressed in this workshop as well as solutions for encouraging stronger parental/guardian relationships and increased involvement in their child(ren)’s education. Personal experiences will illustrate the successes and challenges.

This workshop is limited to 25 participants.

Presenter: **Dr. Rebecca Farrell**, LPCA, Morehead State University. **Danny Whitaker**, Counselor, Camargo Elementary, and **Tonia Toy**, Counselor, Mapleton Elementary, both of Montgomery Co. KY Schools.

13. Making School a Place Kids Want to Be. Levels: K-5

Description: If school is a place kids want to be, then they come in anxious to learn, absenteeism decreases and school problems decrease. Counselors can be an integral part of making their school this kind of place. This interactive workshop will show counselors how to reach every student every day and offer all school programs that will motivate all students. Counselors will also learn ways to zero in on new pertinent topics such as grief and loss, study skills, ways to show teachers their support is appreciated and ways to make parents conference successful.

This workshop is limited to 25 participants.

Presenter: **Arden Martenz**-former school counselor, founder & President of MAR*Co Products, Inc.

14. Encouraging and Supporting Parents of Autistic Children. Levels: K-5, 6-8, 9-12

Description: Autism is the most common of the Pervasive Developmental Disorders. Research indicates that parents of children with autism are under extreme strain and stress. As school counselors, it is important that we understand autism in an effort to support and encourage these parents.

This workshop is limited to 25 participants

Presenter: Debbie Lorence, LCSW, University of Louisville

15. The Power of Collaboration: Principal+FRYSC+Counselor=Increased Academic Success.

Levels: K-5, 6-8, 9-12.

Description: This program will demonstrate the power of collaboration between the Principal, FRYSC, and the School Counselor. Participants are provided a framework from which to develop synergistic relationships for success.

This workshop is limited to 25 participants.

Presenters: Gary Owens, former counselor, leadership development specialist & consultant. Mary Jo Gibson, retired principal, Becky Burton, current FRYSC coordinator,

March 4, 2009 EVENING 3 Hour Workshops Time: 6:00-9:00 PM

16. Amazing Ways to Amaze. Levels: K-5, 6-8 9-12

Description: Have you ever had 5 to 10 minutes with students and would like to have something up your sleeve to occupy that time while building rapport? Attend this workshop and go away with your own bags of tricks to liven things up for making personal connections. Connecting with our students enhance learning-the tricks and activities taught in this workshop will help establish that connection- and it's fun!

This workshop is limited to 25 participants.

Presenter: Carl Olson is a middle school counselor with over 36 years experience from Barron, Wisconsin. He was our guest a few years ago. If you missed him then-be sure to see him this year!

17. Counseling Adolescent Males. Levels: 6-8, 9-12

Description: A foundation is provided to guide individual counseling for helping professional who are working with adolescent males. Participants will leave the presentation with knowledge regarding specific issues when counseling this part of the school population. A review of successful intervention programs and strategies as well as handouts will be provided.

This workshop is limited to 25 participants.

Presenter: Dr. Tony Strange, Assistant Professor, Guidance and Counseling Program, University of Alaska Fairbanks.

18. Child and Adolescent Mental, Emotional and Social Well-Being Levels: K-5, 6-8, 9-12

Description: School counselors face a myriad of mental, emotional and social well-being issues. This presentation provides a repertoire of techniques that will help counselors be more effective and successful in a limited time frame. Implementation of empirically based techniques will be demonstrated from a strength based lens.

This workshop is limited to 25 participants.

Presenter: Dr. Rebecca Farrell, LPCA, Morehead State University.

19. Activity Bonanza. Level: K-5

Description: The workshop name says it all! Oodles of activities and ideas that are so popular with our kids- and that also help with so many of the issues prevalent in today's world. GREAT FUN!

This workshop is limited to 25 participants.

Presenter: Arden Martenz, former school counselor, founder and president of MAR*CO Products, Inc.

Conference At A Glance!

Wednesday, March 4 2009

9:00AM-9:00PM EILA Workshops
(Three and Six Hour Offerings)

Thursday, March 5, 2009

8:30-9:20 Breakout Sessions~Set #1

9:30-10:30 Opening Session-
Speaker-Dr.Judy Bowers

10:40-11:30 Breakout Sessions~Set #2

11:45-1:15 Awards Luncheon

1:30-2:20 Breakout Sessions~Set #3

2:30-3:20 Breakout Sessions~Set #4

2:00-4:30 Expert Expo!

4:30-5:30 President's Reception- "Just For You"

Friday, March 6, 2009

8:30-9:20 Breakout Sessions~Set #5

9:30-10:20 Breakout Sessions~Set #6

10:30-12:00 Closing Session-*Speaker-Julia Taylor*
Silent Auction Winners
Door Prizes Give-away

“School Counselors: Moving from Good to GREAT!”

Dr. Judy Bowers



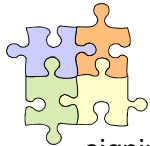
Would you like to listen and learn from someone who has co-written one of the most important documents in the school counseling field? Now is your opportunity! Dr. Judy Bowers will bring our keynote event the morning of Thursday, March 5, 2009 at 9:30!

Judy will be talking to us about the new role of school counselors and how using the ASCA Model will become the greatest resource for your professional library.

(For a **seriously in-depth training** in implementing and using the ASCA Model-BE SURE to sign up for her 6 hour workshop. Space is limited! (See next article))

Dr. Judy Bowers is a consultant for school counseling programs nationally and internationally. She was the administrator of the School Counseling Program in the Tucson Unified School District, Tucson, Arizona. Judy is a past president of the American School Counselor Association (ASCA) and of the Arizona School Counselors Association, Inc. During her seven years on the ASCA Governing Board, she worked to move the association to new levels. Judy is the co-author of the *ASCA National Model: A Framework for School Counseling Programs* (ASCA, 2003) and co-author of the *ASCA National Model Workbook* (ASCA, 2004.)

SPECIAL WORKSHOP!!



Knowing, of course, that ALL of the workshops at the KSCA Conference are spectacular, we are offering an opportunity for **a small group of counselors, administrators, principals and/or superintendents who are sincerely interested in establishing the ASCA National Model in their school and/or district.** Participants signing up for Dr. Judy Bowers workshop will receive the **ASCA Workbook** following **EARLY pre-registration** in order to complete an assignment BEFORE the workshop. The workbook price AND a copy of the **ASCA National Model Handbook** (\$30.00 value) is included in the price of registration! This session is not for the faint-hearted! Those involved in the 6-hour workshop will come away with a working framework for the implementation of the model specifically for their school/district in a workshop led by one of the most knowledgeable presenters- its co-author!

Expert Expo! Our Second Annual *Expert Expo* will be on **Thursday afternoon from 2:00-4:30.** We have invited agencies from across the nation to set up tables with oodles of information and to also allow a time for us to network with these professionals and learn more about what they have to offer for the students of Kentucky schools. This will be a great opportunity for agencies to distribute and for school counselors to gather information to share with the students, parents and staff.



Our President's Reception Is Just For You!

From 4:30-5:30, immediately following our Expert Expo, President Pat Cantwell will be hosting a reception! **This reception is free of charge and for all conference attendees.** Come and enjoy scrumptious snacks and sample delicious treats in during a time of food, friends and fun that is 'just for you' before you go out for a night of shopping in the town in Lexington!

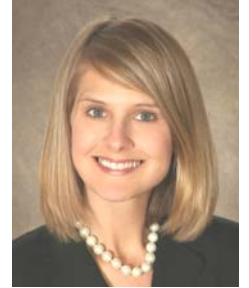
2009 Breakout Sessions! What a GREAT line-up of breakout sessions we have that will appeal to all school counselors at the elementary, middle, *high school* and post-secondary levels! Space this year will not allow me the privilege of sharing some titles, but they are fantastic!!!



Friday, March 6, 2009 Closing Session, 10:30 A.M-12:00

**Made Up & Branded:
Body Image, the Media, and its Effect's on Youth**

Julia V. Taylor



Today's standards of beauty and attractiveness are unrealistic. Unattainable images are used to sell everything from automobiles to vitamins. It's not a coincidence that body image disturbances among today's youth are widespread, contagious, and toxic. This interactive & solution focused keynote will provide school counselors with an in depth understanding of body image, how the media operates, resources to empower male and female students, and tools to teach parents how to help their children to build a lifelong healthy self-image. You won't want to miss THIS closing!

Julia Taylor is a professional school counselor for Wake County Public Schools in Raleigh, North Carolina. She has authored three books; *Salvaging Sisterhood* and *G.I.R.L.S: Group Counseling Activities for Enhancing Social and Emotional Development*. G.I.R.L.S. is two separate curriculums, one for secondary ages, and another for elementary ages.

Following Julia's address, we will be having drawings for a host of 'give-away' items and results of the Silent Auction as a final 'fun time' send-off to you!

Mary Ann Wilson
KSCA Conference Planner
233 Spring Meadows Drive
Science Hill KY 42553

"Kentucky School Counselors: Moving from Good to Great !"

KSCA CONFERENCE 2009 Registration Form
Workshops March 4th and Conference March 5 & 6, 2009

CHECK HERE!!

YES! I WANT A FREE TICKET TO THE AWARDS LUNCHEON-I WILL BE AT THE LUNCHEON OR WILL TURN IT BACK IN AT 8:00 AM THURSDAY MORNING. EVERYONE MUST HAVE A TICKET!!!

Last Name _____ First _____
 Home Address _____ City, State, Zip _____
E-Mail: _____
 School Name _____ Work Phone _____
 School Address _____ City, State, Zip _____

KSCA Workshop and Conference Cancellation Policy: Cancellations made in writing before February 27, 2009 will receive a 50% refund less a \$15.00 processing fee. No refunds will be given for no-shows or for cancellations after February 27th! No refunds will be made until 30 days after the conference.

REGISTRATION FOR CONFERENCE MARCH 5th & 6th (A)

****Remember to mark for your FREE luncheon ticket!! You MUST have one to go to the luncheon****

	Registration By 2/20/09	Late & on-site
KSCA MEMBER	_____ \$150.00	_____ 200.00
NON-MEMBER	_____ \$200.00	_____ \$250.00
STUDENT/RETIREE	_____ \$25.00	_____ \$50.00
	Total Conference Registration	(A)

REGISTRATION FOR EILA WORKSHOPS ON Wednesday, March 4, 2009

ALL DAY SIX HOUR EILA WORKSHOPS 9:00 A.M.-4:00 P.M. March 4, 2009

March 4-2009 9:00 A.M.-4:00 P.M.	Registration By 2/20/09	Late & on-site
1. Developing the Elements of the ASCA National Model School Counseling Program	KSCA MEMBER _____ \$150.00	_____ \$200.00
	NON-MEMBER _____ \$200.00	_____ \$250.00
2. Understanding and Responding to Youth Who Self-Injure	KSCA MEMBER _____ \$150.00	_____ \$200.00
	NON-MEMBER _____ \$200.00	_____ \$250.00
3. When the Grim Reaper Comes to Our School	KSCA MEMBER _____ \$150.00	_____ \$200.00
	NON-MEMBER _____ \$200.00	_____ \$250.00
4. Screening for Suicide and Homicide Risk for Victims of Bullying	KSCA MEMBER _____ \$150.00	_____ \$200.00
	NON-MEMBER _____ \$200.00	_____ \$250.00

MORNING THREE HOUR EILA WORKSHOPS 9:00 A.M. -12:00 Noon March 4, 2009

March 4 2009 9:00 A.M.-12:00 NOON	Registration By 2/20/09	Late & on-site
5. The Five Love Languages	KSCA MEMBER _____ \$ 75.00	_____ \$100.00
	NON-MEMBER _____ \$100.00	_____ \$125.00
6. CANCELLED		
7. Relational Aggression	KSCA MEMBER _____ \$75.00	_____ \$100.00
	NON-MEMBER _____ \$100.00	_____ \$125.00
8. Relationships- How To Get Teachers and Students To "Stay on That Island"	KSCA MEMBER _____ \$75.00	_____ \$100.00
	NON-MEMBER _____ \$100.00	_____ \$125.00
9. Grief At School	KSCA MEMBER _____ \$75.00	_____ \$100.00
	NON-MEMBER _____ 100.00	_____ \$125.00

AFTERNOON THREE HOUR EILA WORKSHOPS 1:00-4:00 PM March 4, 2009		
March 4' 2009 1:00-4:00 P.M.	Registration By 2/20/09	Late & on-site
10. The Magic of Counseling	KSCA MEMBER _____ \$75.00	_____ \$100.00
	NON-MEMBER _____ \$100.00	_____ \$125.00
11. Cyper-Bullying: Our Youth are Dying to Get Online (Includes QPR Training)	KSCA MEMBER _____ \$75.00	_____ \$100.00
	NON-MEMBER _____ \$100.00	_____ \$125.00
12. Tips for Establishing Collaborative and Ethical Parent/Guardian Relationships	KSCA MEMBER _____ \$75.00	_____ \$100.00
	NON-MEMBER _____ \$100.00	_____ \$125.00
13. Making School A Place Kids Want To Be	KSCA MEMBER _____ \$75.00	_____ \$100.00
	NON-MEMBER _____ \$100.00	_____ \$125.00
14. Encouraging and Supporting Parents of Autistic Children	KSCA MEMBER _____ \$75.00	_____ \$100.00
	NON-MEMBER _____ \$100.00	_____ \$125.00
15. The Power Of Collaboration...	KSCA MEMBER _____ \$75.00	_____ \$100.00
	NON-MEMBER _____ \$100.00	_____ \$125.00

EVENING THREE HOUR EILA WORKSHOPS 6:00-9:00 PM		
March 4' 2009 6:00-9:00 P.M.	Registration By 2/20/09	Late & on-site
16. Amazing Ways To Amaze	KSCA MEMBER _____ \$75.00	_____ \$100.00
	NON-MEMBER _____ \$100.00	_____ \$125.00
17. Counseling Adolescent Males	KSCA MEMBER _____ \$75.00	_____ \$100.00
	NON-MEMBER _____ \$100.00	_____ \$125.00
18. Child and Adolescent Mental, Emotional And Social Well Being...	KSCA MEMBER _____ \$75.00	_____ \$100.00
	NON-MEMBER _____ \$100.00	_____ \$125.00
19. Activity Bonanza	KSCA MEMBER _____ \$75.00	_____ \$100.00
	NON-MEMBER _____ \$100.00	_____ \$125.00

	Total Workshop(s) Registration Fee	(B)	(B)
--	---	------------	------------

Did you check YES for your FREE luncheon ticket? A 'must have' to go to the luncheon!!

Total Conference Registration	(A)	
Total Workshop Registration	(B)	
Complementary Membership Dues- Included with Registration!	(C)	0.00
Donation to Lana Pennington Scholarship Fund?	(D)	
TOTAL AMOUNT DUE	\$	

Make Checks/P.O.'s payable to KSCA. Mail check and/or P.O. and the registration form by February 20, 2009 to: Mary Ann Wilson, 233 Spring Meadows Drive, Science Hill KY 42553. If you are planning to pay on-site for a pre-conference workshop, call Mary Ann to make sure there is space available in the session of your choice. *If your first choice is full, you may be placed in another session if your second preference is not known.* Her phone number is (606) 423-9806. Also remember to **make your hotel reservations before February 20, 2009** to get the conference room rate! The Marriott Griffin Gate phone number is 1-800-228-9290 or 1-(859) 231-5100.